



Betty Goudelock Harley Barry

June 9, 2014 - December 31, 2014

Betty Goudelock Harley Barry, was born June 9, 1930 in Mobile, Alabama and passed away peacefully at home December 31, 2014 with her children by her side. She was the only child of Robert and Exa Goudelock who predecease her. She is survived by her three children Kinney S. Harley Jr. (Allen Revell) of West Palm Beach, Fl. ; Wendy Harley (Paul Earnhart) of Crawfordville, Fl. and Sue Ann Smith (Paul Smith) of Birmingham, AL and her grandchildren Jason Earnhart, Will, Bailey, Sam, and Reid Smith as well as her late husband, Joseph Barry's three children; Donna Smiley (Richard) of Littleton, CO., Joseph Barry (Mary) of St. Petersburg, Fl; Margaret Crutchfield (Charlie) of Ocklocknee, Ga., and their grandchildren Jordan and Sydney Smiley, Peyton, Olivia and Parker Barry, Savannah Crutchfield and the late Mac Crutchfield.

Betty graduated from the University of Tennessee at Chattanooga with a degree in Art History. She always enjoyed art, starting as a teacher in Chattanooga Tenn. Betty and her family moved to Tallahassee in 1968. She was a pioneer in the construction industry being the first woman builder in Tallahassee. Her company, Harley Builders, built many homes in Tallahassee including the first solar home. She was one of the founding members of Springtime Tallahassee, Inc. ultimately serving as the first woman float chairman followed by the first woman Krewe Chief representing 20th Century Krewe. She served as a city commissioner from 1985 to 1989 and Mayor from 1987 to 1988. She was instrumental in starting The Winter Festival and

Celebration of Lights Parade as well as the establishment of the new Tallahassee airport. She also was a co-founder of two local newspapers, The Builder News and The Tallahasseean. She earned many awards from the National Home Builders Association, Florida Home Builders Association and The League of Cities during her long career.

Betty was an inspiration to many young women because of her fearless nature and willingness to take risks. She was unwavering in her belief that women could achieve anything that they set their minds to. In her life she shattered many barriers and left a strong legacy for future women in business and politics. She will be missed by all that were blessed to know her.

Services will be Tuesday, January 6, at 2:30 pm at Faith Presbyterian Church on the corner of John Knox and Meridian Roads in Tallahassee. The family will receive visitors following the ceremony in the Fellowship Hall. In lieu of flowers memorial contributions may be made to Big Bend Hospice 1723 Mahan Center Blvd. Tallahassee, Fl. 32308. Susie Mozolic of Bevis Funeral Home is assisting the family with their arrangements. (www.bevisfh.com 850-385-2193)

Previous Events

Memorial Service

JAN 6. 2:30 PM (ET)

Faith Presbyterian Church
2200 North Meridian Rd.
Tallahassee, FL 32303

Tribute Wall



“ *Bevis Funeral Home created a Tribute Video in memory of Betty Godelock Harley Barry*



Bevis Funeral Home - January 06, 2015 at 09:54 AM



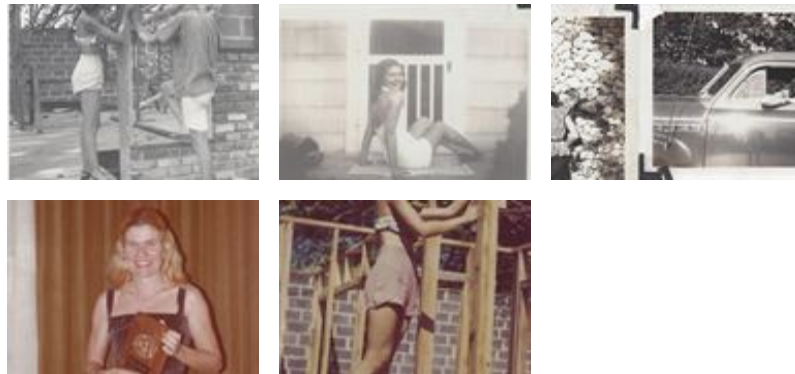
“ *Wendy Harley lit a candle in memory of Betty Godelock Harley Barry*



Wendy Harley - January 06, 2018 at 08:51 AM



“ *85 files added to the album LifeTributes*



Bevis Funeral Home - January 05, 2015 at 04:02 PM

LJ

Absolutely love the photos! I can only imagine those that we're actually there during the photos, how much fun they we're having. Classic, beautiful fun photos of a large personality, munti talented, fun loving, intelligent person.

Leigh Jerry - January 06, 2015 at 08:34 AM

NC

“ Death leaves a heartache no one can heal. Love leaves a memory no one can steal. I've known Betty for over "30 years. She was a tenacious woman, had a wonderful sense of humor and a loving character.



Nancy L. Calhoun - January 02, 2015 at 01:28 PM



“ Heavenly Grace Spray was purchased for the family of Betty Godelock Harley Barry.



January 01, 2015 at 07:48 PM

LJ

“ Leigh Jerry lit a candle in memory of Betty Godelock Harley Barry



Leigh Jerry - December 31, 2014 at 05:19 PM

LJ

“ *The little red corvette with 4X4s sticking out the back of it as she flew down the road, top down. :) One of my earliest memories. Saving every stray cat and dog she found, having many debates with me over "whatever"; she was so passionate about many subjects. Painting artistically and constructionally. Her pieces are beautiful arts of work. Running a tight crew. Mayor of Tallahassee, owner of a Radio Station. Gosh, I can think of so many things when I think of Ms. Betty. I will miss her. Flowers, birdfeeders, a seamstress, an artist, the gazebo at Wildwood. Oh, so many beautiful things. Love you guys. Love you Ms. Betty. Rest in Peace, but continue to dance!*

Leigh Jerry - December 31, 2014 at 05:17 PM