



Cara Lee Alston

July 11, 1967 - February 13, 2023

Cara Alston, 55, passed away unexpectedly at home February 13, 2023. She was predeceased by her daughter Logan Bevis. Cara is survived by her daughter Ashly Lasley and granddaughters Madison and Alyssa of Jefferson City, Missouri, her mother Susan Laseman of Lloyd and her Father, Timothy Nelson of Brisbane, Australia. She also leaves her sisters Sherry Carswell (Eddie) of Lloyd and Dana Henry of Nashville, TN. Todd Wahlquist with Bevis Funeral Home (850-385-2193, www.bevisfh.com) is assisting the family with their arrangements.

Tribute Wall

AL

“ Despite our lives taking different paths, I truly enjoyed many days and nights with Cara. She was very funny, loving and kind and I truly loved and cherished our friendship. Cara you and Logan both were close to me and i miss you both so badly!

Allen - March 17, 2023 at 07:11 AM

KL

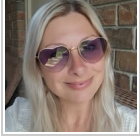
“ I am saddened to hear the loss of Cara. She was always a cheerful person around me. When she entered the room...you knew it. Though we mourn her loss ...please take solace in knowing the pain she has been suffering is gone. Cry for her loss ..then smile and rejoice for the many memories that will endure forever.

Keith Lorch - March 06, 2023 at 03:36 AM



“ I moved to Memphis in 2000. I didn't want to and hated the idea of living here. Then, I walked into TJ Mulligan's. That Pub and the people inside changed my life forever. I'm glad you were one of those people. Will continue to think of you and the great times we shared together. -Cindy Lou!

Cindy Montgomery - February 19, 2023 at 10:01 PM



“ *I'm so sorry to hear of your passing. I know it was a long time ago, but we had such good times at 99 Towers. You'd come by my office with your big smile and ask if I needed anything from Jack's convenient store. Of course, your brash personality caught people off guard, but I thought you were just sassy and full of spunk. Fly high angel. Keep em on their toes. RIH 🕊*

Audrey Roser - February 19, 2023 at 09:30 PM