



Catherine Elizabeth "Beth" Shiver

August 10, 1974 - January 20, 2016

Beth Shiver, age 41, passed away tragically on January 20th, 2016 in Franklin County, FL. Beth was a resident of Carrabelle, FL.

She is survived by daughters, Jessica Locklear and Heather Holton, her granddaughters, Kensleigh and Bailey Evans, and Lizzie Waller, and her ex-husband, Michael Holton. She is also survived by her mother and step-father, Aleta and Kenny Baker, sisters, Bridgett Shiver-Medina and Amanda Baker, and brothers, Jamie Shiver, Ray Shiver, and Carl Malachut, along with many aunts, uncles, cousins, nieces, and nephews. A special thanks to Janice Ann Shiver, who was more than just a best friend to Beth, she was a sister.

Beth is preceded in death by her father Raymond "Tenderfoot" Shiver, her Granny Lizzie and grandfather Lester Shiver, grandmother Annie Catherine Miley, and grandfather Leroy Miley.

A memorial service to honor Beth's life will be held on January 30th, 2016 at 4:00 p.m. at the Carrabelle United Methodist Church, located at 102 NE Ave. B in Carrabelle, FL. All family and friends are welcome.

David Conn of Bevis Funeral Home, Harvey-Young Chapel in Crawfordville assisted the family. (850-926-3333 or Bevisfh.com).

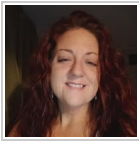
Tribute Wall

BS

“ *Betty Shiver lit a candle in memory of Catherine Elizabeth "Beth" Shiver*




Betty shiver - January 26, 2016 at 06:53 AM



“ *Luv and prayers to you all! RIP Beth*



Jennifer Millender - January 25, 2016 at 08:21 PM

 Amber Holton-Cardwell

“ *1 file added to the tribute wall*



Amber Holton-Cardwell - January 25, 2016 at 01:04 PM