



Larry LaRue Kilmer

May 20, 1947 - September 6, 2012

Larry LaRue Kilmer, 65, passed away at his home in Tallahassee, FL on Thursday September 6, 2012 at 12:30am surrounded by family and loved ones after an extended illness. Larry was born on May 20, 1947 in New Castle, Pennsylvania and raised in Volant, PA by his parents along with three brothers and five sisters. His family had little money but provided Larry and his siblings a balance of love, respect for others and strong work & life ethics that he has passed on to his own children. He was born to George Edward Kilmer (95 years old) and the late Anna Mae Schmouder Kilmer. He is survived by his loving wife of forty three years, Bev Kilmer; a daughter, Teresa Dean; sons Ken Kilmer and Kirk Kilmer; Three grandchildren: Pamela Kilmer, Ken Kilmer II and Jacquelyn Dean; Five sisters: Nancy Cearfoss, Helen McCarrick; Darlene Marret, Karen McCord and Virginia McConnell. Three brothers: Claude Kilmer, Earl Kilmer, Roy Kilmer; his father George Kilmer and a very large extended family. Larry is also extremely missed by his loving 24/7 four legged companion, Scooter. Larry joined the Air Force in 1965, the summer he graduated from high school and was stationed at Sewart AFB in Smyrna, TN, where he met his wife, Bev. It was love at first sight and they were married three months later. The couple came to Tallahassee with their family in 1980. Larry was co-owner of Everite Time and Equipment for eight years before opening All-Tech Systems in 1988 until, due to his health, its closing in 2009. Larry was a private and godly man who believed and lived on the premise of honesty and integrity and was always ready to help anyone at any time. Loved

by many, and respected by all. A memorial service will be held Monday, September 10, 2012 at 11:00 AM, at Bevis Funeral Home Chapel, 2710 N. Monroe St. Tallahassee, FL. 32303. Memorial contributions may be made to Woodland Hall Academy, 5246 Centerville Road, Tallahassee, FL 32309. Bevis Funeral Home, (850) 385-2193, www.bevisfh.com, is in charge of the arrangements.

Previous Events

Service

SEP **10**. 11:00 AM (ET)

Bevis Funeral Home & Crematory
200 John Knox Rd
Tallahassee, FL 32303
(850) 385-2193

Tribute Wall



“ *We will always Love you and Remember When...*

Bev Kilmer - June 26, 2013 at 11:45 AM

WA

“ *Bev and family,*

We are so sorry for your great loss. If there is anything we can do, please let us know. You are in our thoughts and prayers.

The Staff of Woodland Hall Academy

Woodland Hall Academy - September 11, 2012 at 02:03 PM

IB

“ *Ina Boers-Buitelaar lit a candle in memory of Larry LaRue Kilmer*



Ina Boers-Buitelaar - September 11, 2012 at 11:44 AM

JC

“ *Jane (Biggerstaff Griffiths) Camero lit a candle in memory of Larry LaRue Kilmer*



Jane (Biggerstaff Griffiths) Camero - September 11, 2012 at 11:19 AM

KV

“ *Kelly Varano lit a candle in memory of Larry LaRue Kilmer*



Kelly Varano - September 09, 2012 at 08:04 PM

CW

“ *Mary and Carolyn Wu wish to convey their deepest condolences to the Kilmer family on the passing of Larry Kilmer.*

Carolyn Wu - September 09, 2012 at 07:39 PM

JW

“ *Jan and Jim Watford purchased the Blue Caribbe an Bouquet for the family of Larry LaRue Kilmer.*



Jan and Jim Watford - September 09, 2012 at 07:59 AM

JW

“ *Jim and I have fun memories of bowling with you and Bev. You will be remembered as someone with a big heart, kind and always supported Bev in whatever ventures she took on. As a father and grandfather you set an example of what a husband, caring parent and grandparent should be. Our thoughts and prayers are with Bev, Theresa, Kenny and Kirk, that God will hold them in the palm of His hands and give them the peace of understanding that only He can give. Jan and Jim Watford*

Jan and Jim Watford - September 09, 2012 at 07:45 AM

BE

“ 2 files added to the album *New Album Name*



Bianca Ebbenhorst - September 08, 2012 at 02:44 PM

SC

“ *Sonya Conti lit a candle in memory of Larry LaRue Kilmer*



Sonya Conti - September 08, 2012 at 02:15 PM

TE

“ *Theo Ebbenhorst lit a candle in memory of Larry LaRue Kilmer*



Theo Ebbenhorst - September 07, 2012 at 11:56 PM

PK

“ *Pamela Kilmer lit a candle in memory of Larry LaRue Kilmer*



Pamela Kilmer - September 07, 2012 at 11:54 PM

KI

“ *Ken Kilmer II lit a candle in memory of Larry LaRue Kilmer*



Ken Kilmer II - September 07, 2012 at 11:53 PM

BI

“ *Bianca lit a candle in memory of Larry LaRue Kilmer*



Bianca - September 07, 2012 at 11:52 PM

MJ

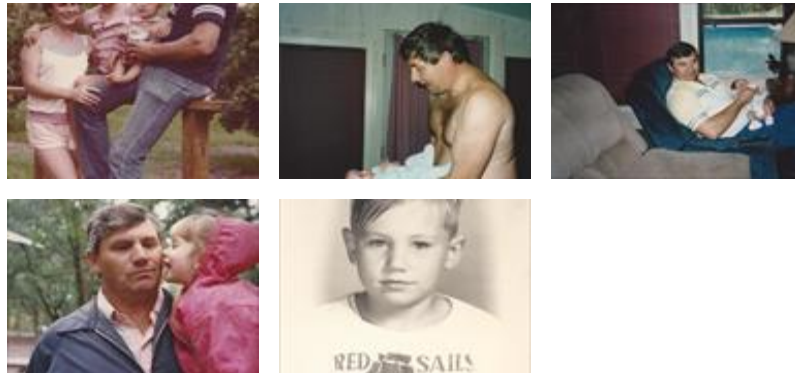
“ *Mike Jones lit a candle in memory of Larry LaRue Kilmer*



Mike Jones - September 07, 2012 at 10:38 PM

BK

“ 36 files added to the album *New Album Name*



Bev Kilmer - September 07, 2012 at 08:38 PM

JW

love the pictures. Loving memories of a long and happy marriage and life together.

Jan Watford - September 09, 2012 at 04:29 PM

DM

so sorry to hear of your loss. thinking of you and your family.

Emily and Don McCord and family.

donald mccord - September 10, 2012 at 09:19 AM

TD

“ *Teresa Dean lit a candle in memory of Larry LaRue Kilmer*



Teresa Dean - September 07, 2012 at 06:56 PM

TD

“ 3 files added to the album *New Album Name*



Teresa Dean - September 07, 2012 at 06:48 PM